



The Chesterfield



Traditional Home Series

28' x 52' Size

1,266 Square Feet

Two Bedrooms

Two Full Baths

The living room section of the Chesterfield features a vaulted ceiling with scissor trusses above and knotty pine v-match below. The bedroom wings are done in truss rafters with knotty pine v-match beneath. The upper gable ends of the bedroom areas are designed and shown with log siding on the exterior.

Optional Design Ideas

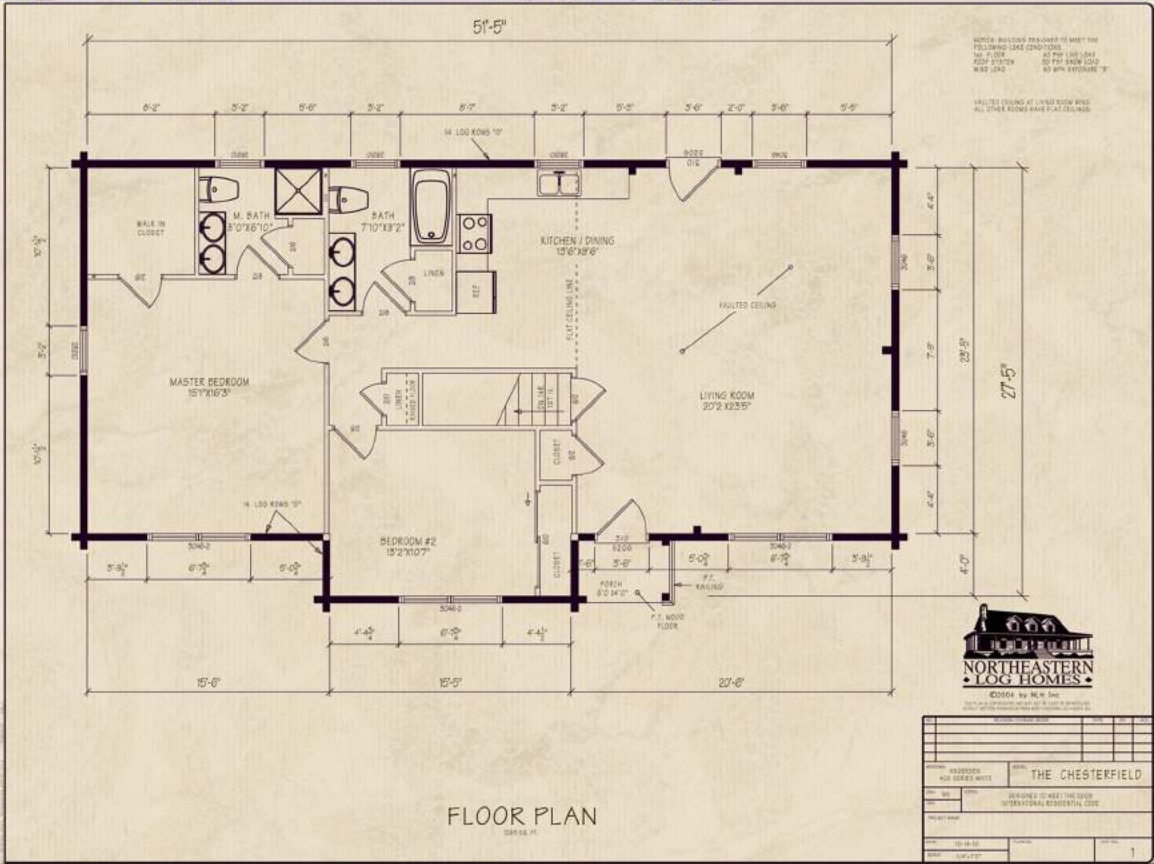
Add a deck to the left side off the Master Bedroom

Put a frenchwood door in the Master Bedroom to the new deck

Grow the entry closet by borrowing some space from the oversize closet in bedroom #2

Add a mini-pantry by borrowing some space from the oversize linen closet in the bath

Add a deck or porch off the rear of the Living Room



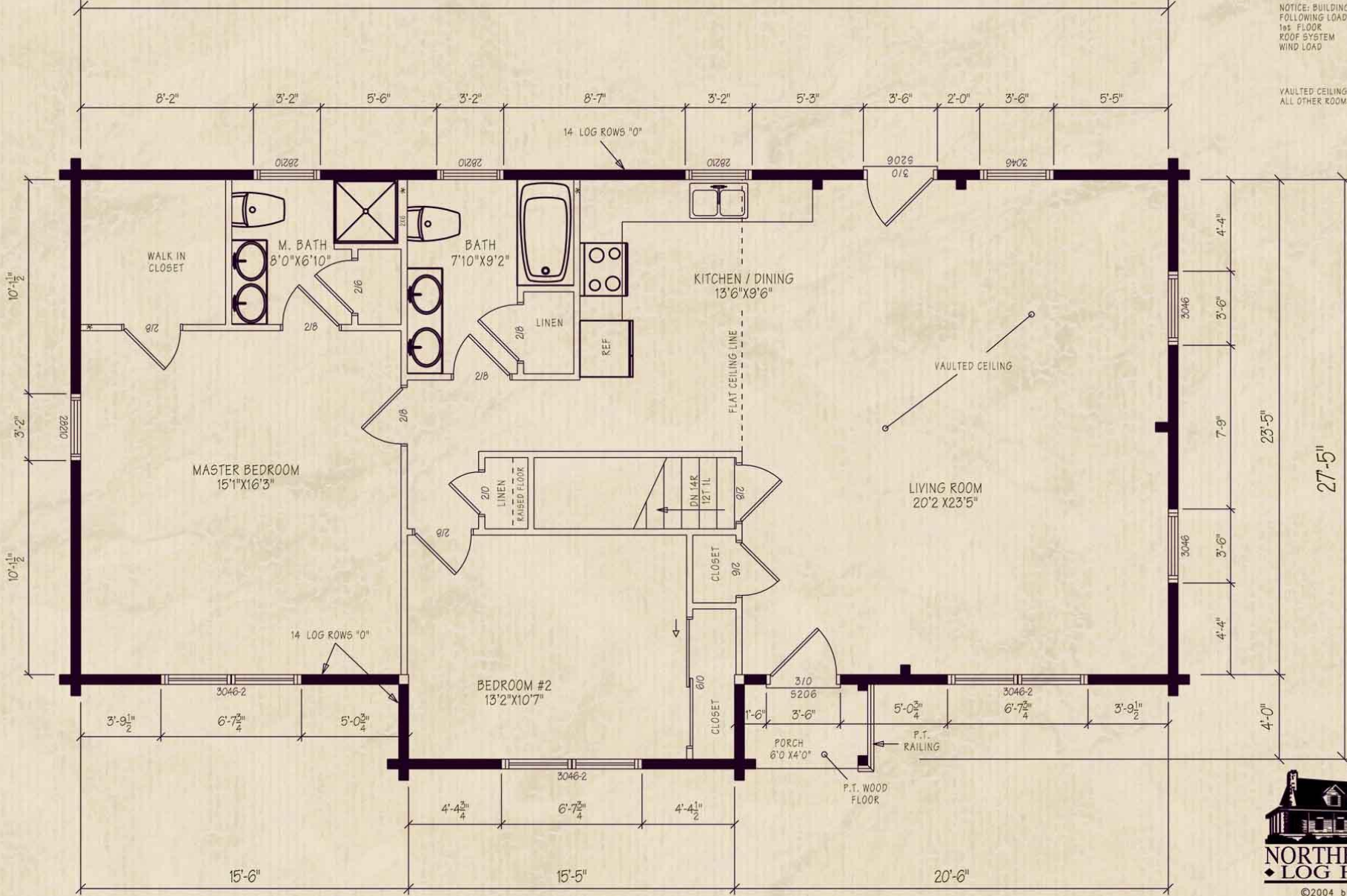
Northeastern Log Homes
info@northeasternlog.com 800-624-2797 www.northeasternlog.com

*Artist's rendering, photography and optional design ideas may vary from the standard model. Please always consult the standard floorplan and refer to the Traditional Home Series material list as to what is included.

51'-5"

NOTICE: BUILDING DESIGNED TO MEET THE FOLLOWING LOAD CONDITIONS:
1st FLOOR 40 PSF LIVE LOAD
ROOF SYSTEM 50 PSF SNOW LOAD
WIND LOAD 90 MPH EXPOSURE "B"

VAULTED CEILING AT LIVING ROOM WING.
ALL OTHER ROOMS HAVE FLAT CEILINGS.



FLOOR PLAN

1265 SQ. FT.



**NORTHEASTERN
LOG HOMES**

©2004 by NLH Inc

THIS PLAN IS COPYRIGHTED AND MAY NOT BE USED OR REPRODUCED WITHOUT WRITTEN PERMISSION FROM NORTHEASTERN LOG HOMES INC.

REV.	REVISION/CHANGE ORDER	DATE	BY	CHKD.
WINDOW: ANDERSEN 400 SERIES WHITE		MODEL: THE CHESTERFIELD		
DRN: MK	CODE:	DESIGNED TO MEET THE 2009 INTERNATIONAL RESIDENTIAL CODE		
PROJECT NAME:				
DATE: 10-14-10	PLAN NO.	SHT. NO. 1		
SCALE: 1/4"=10"				